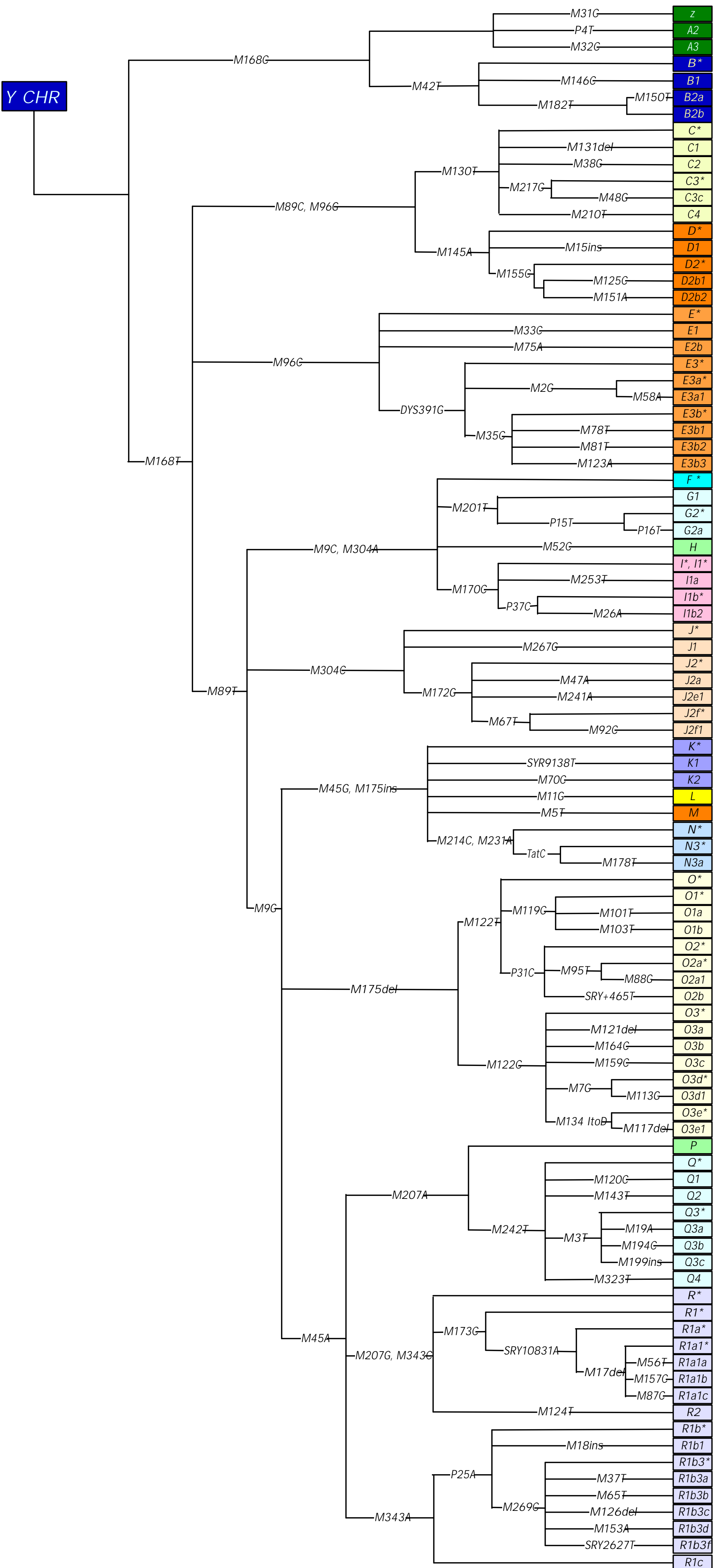


Paternal Groups as Defined by Y Chromosome Polymorphisms



This figure shows how various single nucleotide polymorphisms , or SNPs (labels on the lines) are used to classify your sample into a Y-chromosome haplogroup (the boxes on the right). SNPs are single base differences - you have a G and I have an A at a particular spot in our DNA, for example. SNPs are the major source of genetic variability between individuals. Each haplogroup represents a set of Y-chromosomes with a similar genetic history, and thus similar genetic fingerprints as determined by the SNP profile.

